

# IN TOUCH

with the ministry and people of Living Word

Volume 29, Issue 7

April 26, 2020

## *Christians Respond to an Anxious World* by Daniel Torkelson

Watching the nation as it struggles to understand any pandemic has always given me pause to consider whether Christians really know how to think like Christians in a matter such as this. We, as God's people, seem too easily carried up in the same speculative panic that rules the minds of many when a crisis such as the Wuhan coronavirus manifests itself.

In Matthew 6, Jesus says "Therefore do not be anxious, saying, 'What shall we eat?' or 'What shall we drink?' or 'What shall we wear?' For the Gentiles seek after all these things, and you heavenly Father knows that you need them all. But seek first the kingdom of God and his righteousness, and all these things will be added to you"

This seems to indicate Christ does not want us to panic. We have opportunities during this time to model the Christian difference and to demonstrate how this gospel of ours is a better message than any other.

### **The Difference Between Concern and Worry**

The Wuhan virus is very serious, and those who got seriously sick or have even died from it are not to be taken lightly nor joked about. There are, nevertheless, significant distinctions we must make to think about this in a biblical manner.

As Christians who have received the love of Christ, we should love one another, so a healthy concern for the health and welfare of our neighbor necessitates a rightful concern about the spread of the Wuhan virus. Just as we would never want Wuhan virus for ourselves, we should not want it for our neighbor.

We should ensure, as faithful citizens, that our government and medical communities are responding to it properly. We should be concerned to the point of taking precautionary measures to mitigate against contracting it or spreading it. Wash your hands thoroughly. (Sing the "Doxology" at a moderate tempo while you wash your hands. It works.)

We Christians show God has loved us by loving other people. The Good Samaritan went to great lengths to save the half-dead man on the side of the road. He is properly understood as a picture of Jesus, who gave his life to save you. Greater love has no man than this. We cannot worry about God's goodness and grace, we need to trust in it.

So where does concern end, you may ask? It ends at the point of worry. When Jesus instructed his disciples not to worry, he referred to them as having "little faith." It takes no faith to worry. As Christians, we often fail our Lord by looking too much like the rest of the world.

This means panic is not an option. If it takes no faith to worry, then panic is the equivalent of apostasy, revealing that we are our own "gods" and that not having absolute control over all matters regarding our bodies and our lives alarms us. Now is our time to show an anxious nation and an anxious world how Christianity and faith is better than panic and worry.

### Inside this issue:

Christians Respond to an Anxious World	1
New Facelift for Living Word	2
Connection Opportunities and Updates	3
Community and Church Info	4
Bethesda Cards	5

### PRAYER CHAIN

#### REQUESTS

Please call

Eleanor Galik

708-302-1686

for immediate prayers



Living Word  
Lutheran Church

16301 South Wolf Road  
Orland Park, IL 60467

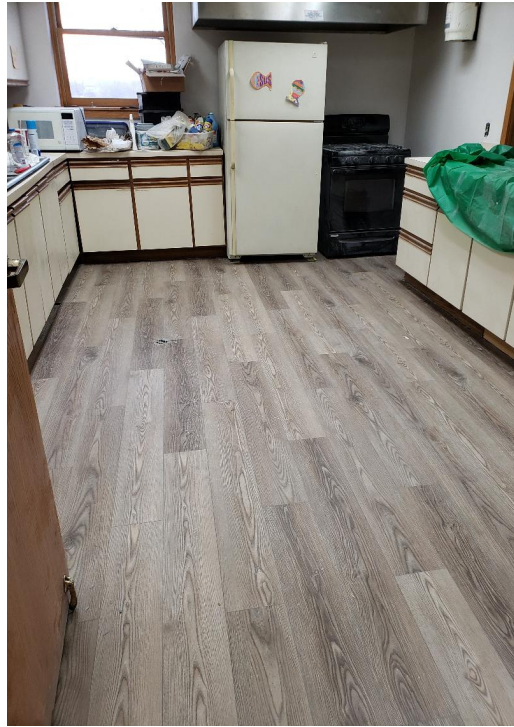
708-403-9673

livingwordorland.org  
intouchlwlc@yahoo.com

CHURCH OFFICE HOURS  
Mon - Fri 9 am - 2 pm

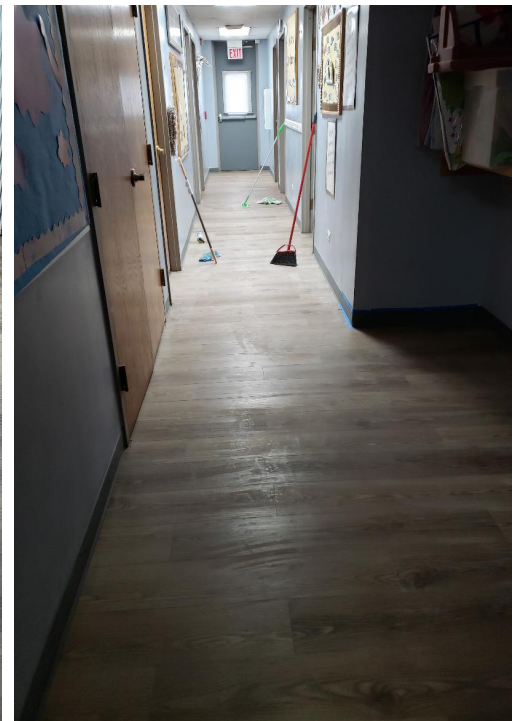
SUNDAY SCHEDULE  
8:15 am Adult study  
9:30 am Worship

## *New Facelift for Living Word*



As you can see by the latest pictures, the remodeling has really come along nicely. The installers only have a few things to take care of, some of the baseboards and trim work need to be done and to take care of a few issues that have come up. They will also be finishing up their work in the bathrooms and then they will finish up by laying the flooring in the crying room.

Once they have finished everything and clear out, we will be looking to organizing a few small groups of volunteers to help us clean up and/or to paint a few rooms. If you are interested in helping and are available in the next week or two, please call the office to let us know. Whatever help you can give will be greatly appreciated.





## Opportunities to Connect with God and Pastor Lee

I invite all Living Word church members, family and friends to a regularly scheduled Zoom meeting ("Zoom" is a meeting app you can easily find online). The purpose of "Quiet Time With Pastor Lee" is to:

- 1) Help us keep track of you and those you love during this pandemic,
- 2) Assist you and yours as needed and as able,
- 3) Share helpful information and encouragement,
- 4) Spend time with the Lord, drawing strength from His Word and in prayer during this time when we cannot otherwise meet.

Here I ask your help in making sure no Living Word member falls through the communication cracks because we may not have everyone's contact information (in this case email address). Please confirm with other church members that they have this invitation, and feel free to also invite your family and friends to participate. My wife Elaine and I have set up this app for up to 100 people at a time, and can scale this number as needed.

Please follow the below instructions to join, and let me know if you have any questions or concerns. Your church family is there for you and those you love.

Blessings!

Pastor Lee

Topic: Quiet Time With Pastor Lee

Time: This is a recurring meeting scheduled daily--every day--at 7 PM during this pandemic crisis for Living Word members, families and friends. I plan to host this meeting each day unless I am unavailable.

**Please use the below link at 7 PM on any day you feel like joining our "Quiet Time With Pastor Lee" Zoom Meeting during this pandemic crisis--we are there for you and your loved ones:**

<https://us04web.zoom.us/j/924816850>

**Meeting ID: 924 816 850**

If you are joining us on your cell phone, Zoom may ask you to download their free App. This can be done from the Google Store or at Zoom.com.

One tap mobile

+13126266799,,924816850# US (Chicago)

+16465588656,,924816850# US (New York)

Dial by your location

+1 312 626 6799 US (Chicago)

+1 646 558 8656 US (New York)

+1 346 248 7799 US (Houston)

+1 720 707 2699 US (Denver)

+1 253 215 8782 US

+1 301 715 8592 US

Meeting ID: 924 816 850

Find your local number: <https://us04web.zoom.us/j/feDYF4qEA5>

## RADIO & TV OPPORTUNITIES

- **Worship Anew** 8:00 a.m. Sunday - Comcast channel 184 (TLN) & 8 (SD), WPWR channel 50 AT&T U-verse channel 1008 (HD) & 8 (SD), Dish Network # 8495 10:30 a.m. Sunday - DIRECTV channel 377 (TCT)
- **The Lutheran Hour** 10 a.m. and 6 p.m. Sundays on 1230 AM; and 9:30a.m. Sundays on 1580 AM

**NEED HELP, PLEASE ASK.** Please know that we are here for you. If you need groceries or medicine and can not go out, we have some wonderful volunteers who will do that for you. Any errands that need to be done, please ask, we're here.

**DEVOTIONAL PRAYER FOR THE WEEK** *Plans fail for lack of counsel, but with many advisers they succeed.* Proverbs 15:22 (NIV)

The Christian life is not meant to be lived alone, and Christian growth seldom occurs outside of relationships with other Christians used by God in our lives. Each of us needs a Paul (to grow us up in God), a Barnabas (to support and encourage us) and a Timothy (whom we can help to grow in Christ) in our lives. Listen to Jason's examples of how God uses these relationships to bring us into maturity.



### Church Contacts

**Pastor Steven Lee**

[intouchlwlc@yahoo.com](mailto:intouchlwlc@yahoo.com)

**Webmaster, Diana Motel**

[dianamotel@yahoo.com](mailto:dianamotel@yahoo.com)

### Leadership Team

**Rick Boehm** - President

**Jim Schultheiss** - Vice President

**Bobbi Pote** - Treasurer

**Diana Motel** - Secretary

### Members at Large

Jim McKinney

Pastor John Bucka

Donna Wasilkoff

## Stewardship Snapshot

**April 19, 2020**

**Online Service**

**Financial Support**

\$3,370.00 General Fund

Living Word's budget calls for weekly offerings averaging \$3654 to fund our ministry. Regular, intentional and meaningful contributions from what the Lord provides you helps carry this out.

## Community and Church Info

**CARDS AND NOTES WANTED** Bethesda Lutheran Communities has been a Mission of the Month in the past, and we had planned on them being the Mission of the Month for April before the stay at home order was in place. I have inserted a request for some notes and or cards that you could send to their residents. Also they included a link that will include a wish list for some items that can be ordered to help keep the residents busy. There's a note and Bible verse that can be used for the inside of the card, or if you want to have a more personal note and your favorite verse, you can send that instead. Bethesda Lutheran Communities is following all guidelines given by the CDC. This means the people we support cannot leave home or have any visitors. As you know, this stirs up a sense of loneliness, frustration and confusion at times. Can you help right from your own home? Bethesda supports 1500+ adults with intellectual and developmental disabilities and has 3000+ employees supporting them. Please consider writing to people with disabilities and/or their staff. Both need encouragement and prayers!

**To use the attached card on the next 2 pages, print pages 5 & 6 and under properties click on 2 sided print, flip on short edge and then once you fold it in half you'll have a card to color and send or make/draw your own for the creative artistic people. There is no need to go out and purchase a card.** If you prefer to use something from home, it could be fun to get a Valentine or Christmas card in the midst of this crazy time! Consider including a Bible verse and encouraging words. Thank you for this kindness during these extraordinary times.

### SEND TO:

Bethesda Lutheran Communities-Volunteer Services

The Bethesda Family

1615 Vance Avenue

Fort Wayne, IN 46805

Any questions or comments: [volunteer.services@Bethesdalcl.org](mailto:volunteer.services@Bethesdalcl.org) or [ReligiousLife@Bethesdalcl.org](mailto:ReligiousLife@Bethesdalcl.org)

Here are the Amazon wish lists for the homes in our area.

[https://www.amazon.com/hz/wishlist/ls/3S2WLN7WYNVUA?ref=cm\\_sw\\_em\\_r\\_wl\\_dp\\_TYUQILltuZYqq](https://www.amazon.com/hz/wishlist/ls/3S2WLN7WYNVUA?ref=cm_sw_em_r_wl_dp_TYUQILltuZYqq).

If people would like to support the Amazon wish lists they will need to send them to

Bethesda Lutheran Communities


Attn: (Home/Wish list Name)

13550 S Route 30 Ste 200

Plainfield, IL 60544

**SPECIAL THANKS WAS POSTED:** Diana Motel has posted a very special thank you to Pastor Lee on our website, I thought I should share it with everyone in our newsletter: Thank you for all your work during this time Pastor.

Thank you Diana for reminding us how important a pastor's work is during this time, and thank you Pastor Lee for keeping us connected to the Word of our Lord and helping and leading us to worship together at least virtually and spiritually every week. God Bless you and Elaine for all that you do. Your family from Living Word Lutheran Church.

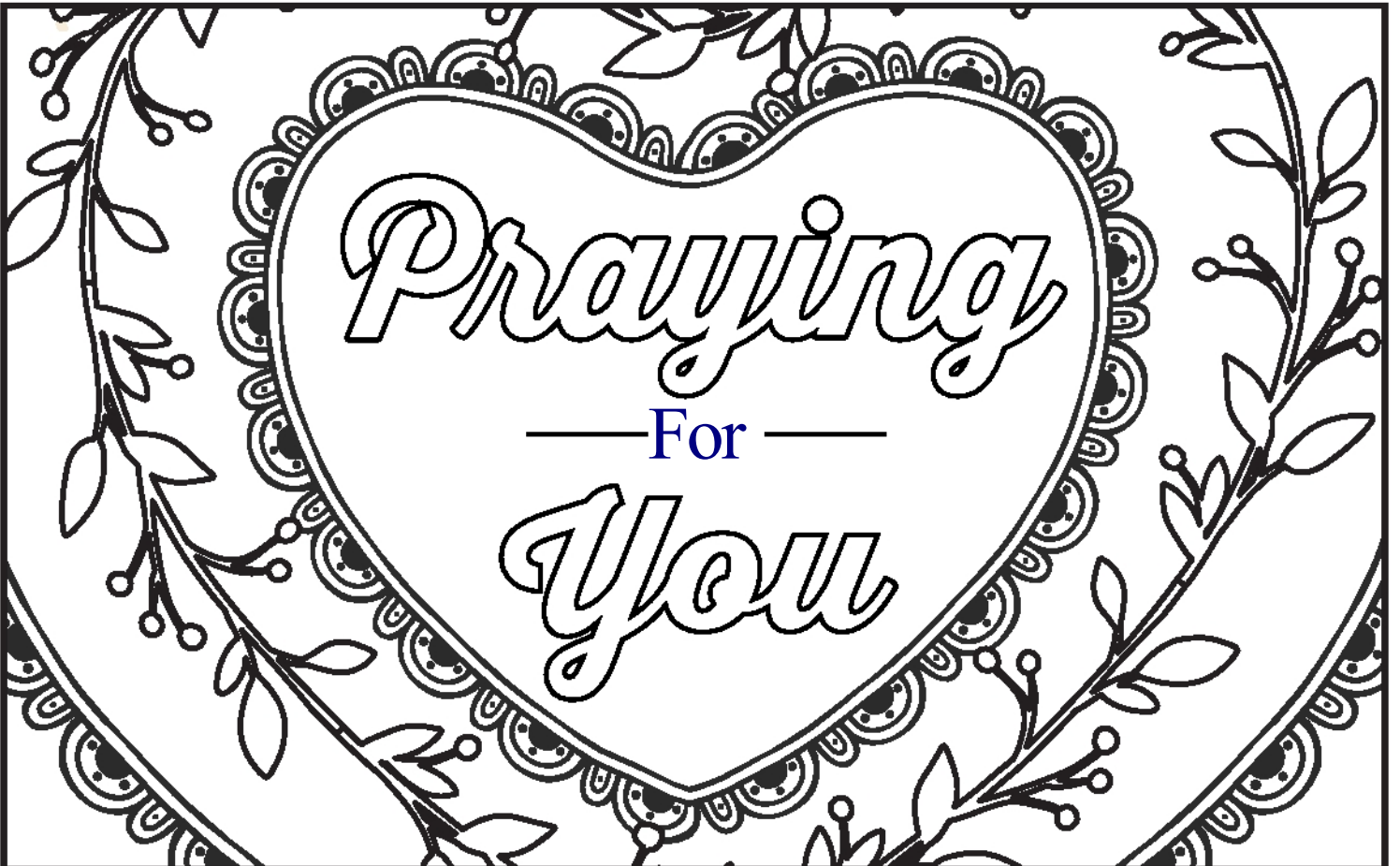
**Shout-Out Your  
Pastor: If you are still  
receiving the Word  
from a pastor In this  
pandemic, thank them  
for their service! They  
are an Essential  
Worker; Without the  
Word we simply  
cannot survive!!** 

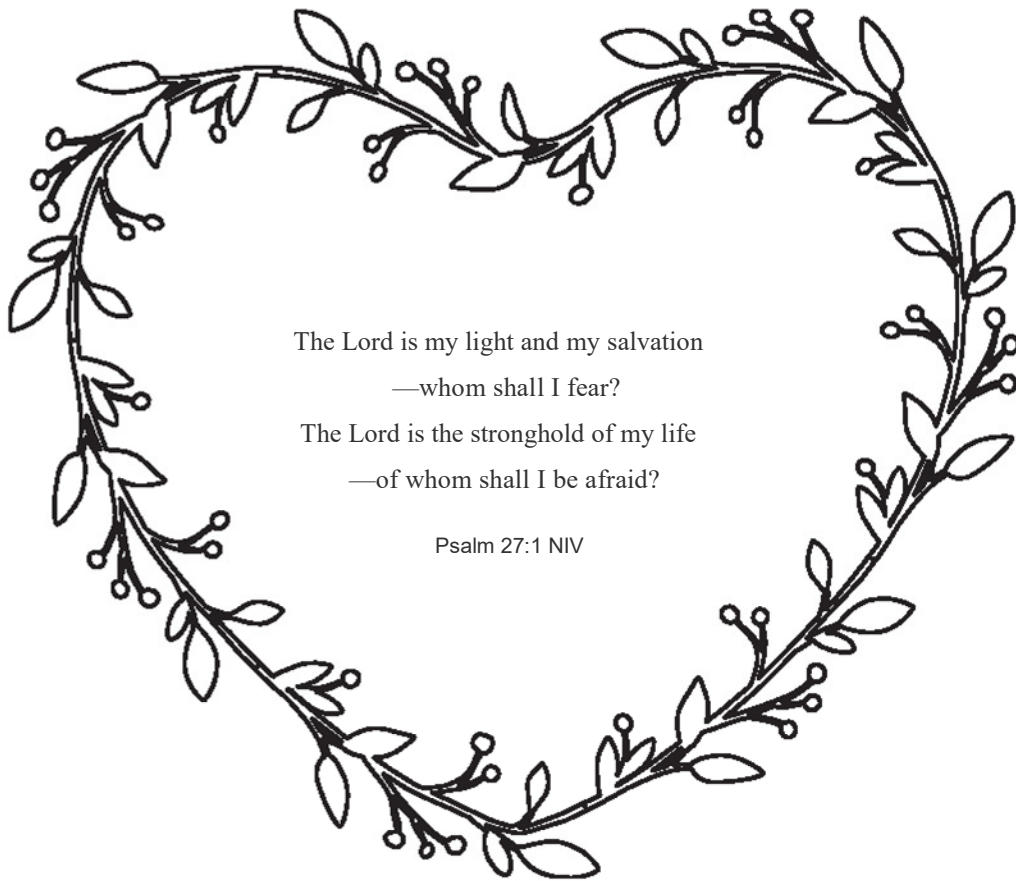


#includeAllAbilities

Enhance the lives of people with  
intellectual and developmental disabilities  
through services that share the good news of  
Jesus Christ.

## Our Mission:





The Lord is my light and my salvation  
—whom shall I fear?

The Lord is the stronghold of my life  
—of whom shall I be afraid?

Psalms 27:1 NIV

Thank You for being our Light in this dark time.

We need You because You give us the grace of forgiveness.

We need You because You have a plan for our lives.

You are our strength and keep us steady when we are unsure.

Guide us, and remind us of Your love.

Help us follow Your path,

for You know what we truly need.

Amen.

